



GMT MONTHLY MEMBERSHIP PROGRESS REPORT

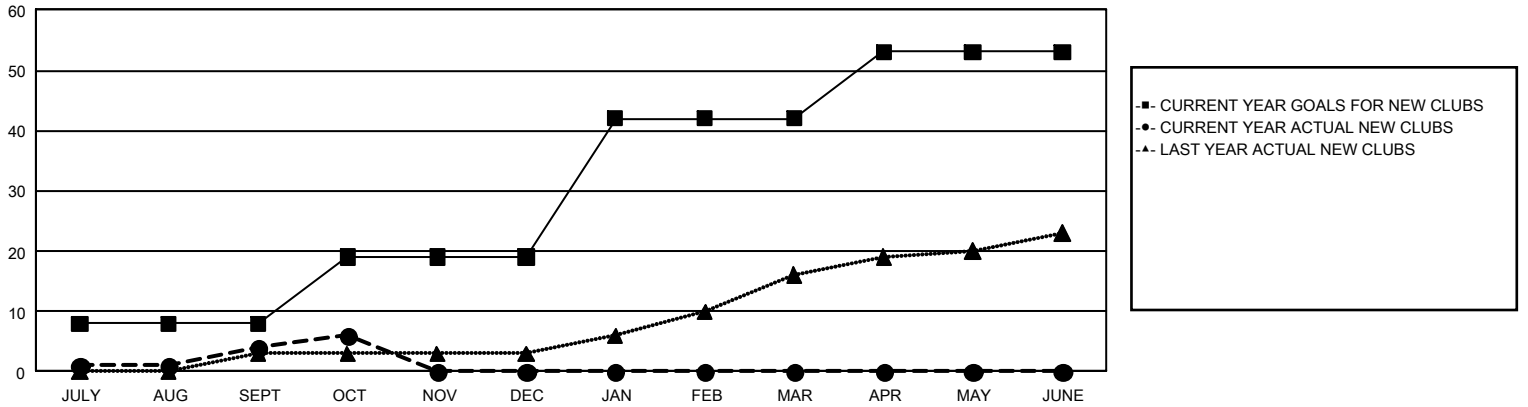
GAT Constitutional Area 5 - Japan

Results as of: 10/31/2024

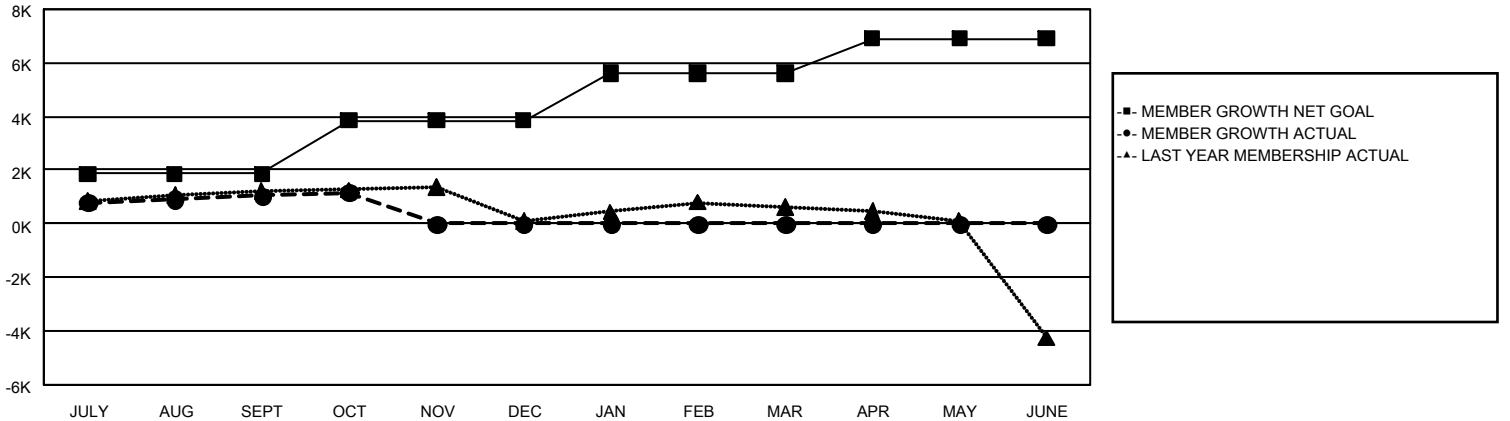
REPORT DOES NOT INCLUDE CLUBS IN UNDISTRICTED AREAS.

Clubs				Members			
RESULTS FOR 2024-2025				RESULTS FOR 2024-2025			
QUARTER	NEW CLUB GOAL	NEW CLUBS	DROPPED CLUBS	QUARTER	MEMBER GROWTH NET GOAL	MEMBER GROWTH ACTUAL	DROPPED MEMBERS ACTUAL (including transfers)
JULY/AUG/SEPT	8	4	3	JULY/AUG/SEPT	1,850	2,829	1,555
OCT/NOV/DEC	11	2	0	OCT/NOV/DEC	1,994	604	430
JAN/FEB/MAR	23	0	0	JAN/FEB/MAR	1,787	0	0
APR/MAY/JUNE	11	0	0	APR/MAY/JUNE	1,271	0	0

GOALS AND ACTUAL NEW CLUBS CUMULATIVE



GOALS AND ACTUAL MEMBERS CUMULATIVE



DROPPED CLUBS: 3	1,307 CLUBS OF 2,707 ADDED 1 OR MORE NEW MEMBERS	<u>GENDER DISTRIBUTION</u> MALE 72,678 (77.44%) FEMALE 21,157 (22.54%)
<u>DROPPED MEMBERS</u> DECEASED 234 CLUB CANCELLED 1 OTHER 1,652 <hr/> TOTAL 1,887	CLICK HERE FOR CUMULATIVE MEMBERSHIP DATA	TOTAL FAMILY UNIT MEMBERS 0 FAMILY MEMBERS PAYING HALF DUES 0